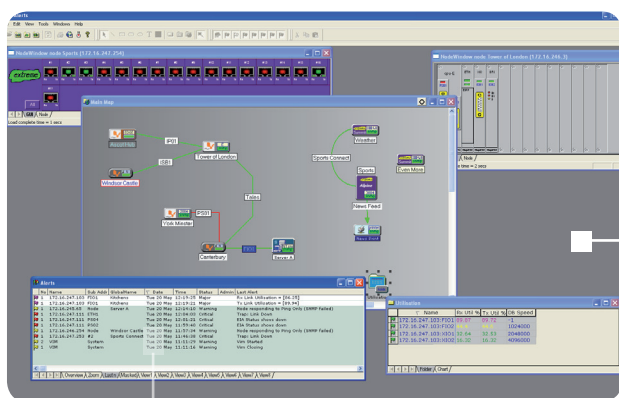


AEP MegaWATCH is a windows based SNMP Network Management Application that allows customers to monitor their network and gather useful information about the condition and status of any AEP or non AEP Networks component deployed.

MegaWATCH is an extremely powerful tool that creates network maps (these are graphical views of the network and configuration). MegaWATCH will regularly poll each piece of equipment in the network and provide a status on each element, right down to the port level.

MegaWATCH is based on client server architecture and can be deployed as a standalone system or distributed across a number of workstations communicating with a server. Server databases can be supported on Windows or Unix operating systems. MegaWATCH also supports a 'manager of managers' function where a number of servers need to be deployed for managing large networks.



MegaWATCH

## FEATURES

- MS Access/SQL Server or Oracle database
- Remote workstations
- Alert manager with e-mail, export, launch, print, sounds, time filters, custom pages
- Configuration collector/archive
- User folder configuration
- Integrated MIB table viewer
- Port and CPU utilisation display
- ISDN connection monitoring
- Integrated Telnet terminal emulation with file transfer and macros
- Multi-level map and folder hierarchy
- Transparent GIF icons
- Customer user views via logon
- Folders display data as alphanumeric or charts
- Integrated Multi-Ping, DOS Ping, TFTP, Trace route, Telnet, MIB Table Viewer
- Hover over network object to see status and details

## Enterprise Reports

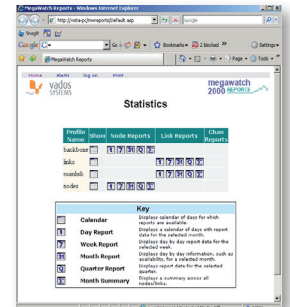
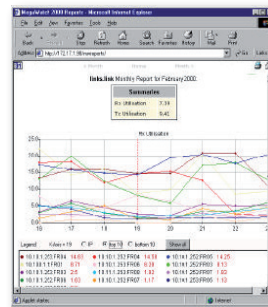
Enterprise Reports produces highest quality network reports in a flexible format, and at a fraction of the cost of alternative offerings.

- One-off charge – no additional fees to add new network devices or create new reports.
- Based on Crystal Reports and Chart FX.
- May be run from Windows Scheduler for automatic report generation, with e-mail direct to the desktop.
- Output in HTML, PDF, RTF, MHT (web archive) formats. Print and e-mail.
- Mix of text and chart types. Ordering by name or parameter value. Optionally display device name, and or IP address.
- Configurable logos, report header and footer, column headings.
- Threshold charts show the percentage of time a monitored value was over five user-defined thresholds levels.
- Thermo-charts highlight 'hotspots' at a glance.
- Create time-window views onto the report data.

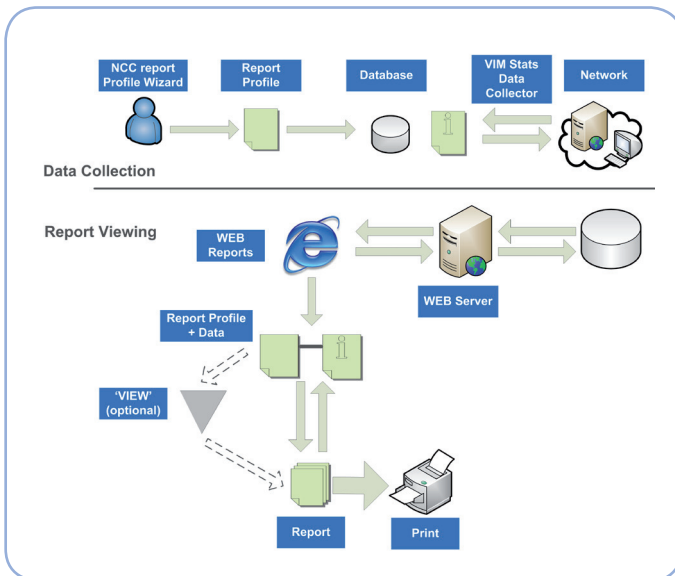
## Web Reports

Web Reports module enables viewing of network reports from a Web Browser, using a Web Server in a M-Watch system.

- One-off charge – no additional fees to add new network devices or create new reports.
- Password control allows different users to see only their own reports.
- Calendar function shows days for which data is available.
- Day, Week, Month, Quarter views with drill down.
- Chart entries can be ordered by IP address, Name or best worst performers.
- Click network object to highlight others in the chart.
- Create additional reports (views) on a sub-set of the network objects selected from the main report.



### Wizard report Process



### Minimum requirements:

#### MegaWATCH Server

Pentium Processor 256Mhz with 1Ghz memory  
2.5 GByte Hard Drive and CD ROM Drive  
Graphics capability: 1024 x 768 x 64k colours  
Database - Microsoft Access or Microsoft SQL Server  
Windows 2000, 2003 or XP  
Ethernet LAN Adapter  
Optional sound card

#### MegaWATCH Workstation

Pentium Processor 256Mhz with 1Ghz memory  
1.7 GByte Hard Drive and CD ROM Drive  
Graphics capability: 1024 x 768 x 64k colours  
Windows 2000, 2003 or XP  
Ethernet LAN Adapter  
Optional sound card

#### United States

Toll-Free: +1-877-638-4552  
Tel: +1-732-652-5200

Email: [sales@aepnetworks.com](mailto:sales@aepnetworks.com) Web: [www.aepnetworks.com](http://www.aepnetworks.com)

#### Europe

Tel: +44 1344 637 300

#### Greater China

Tel: +8621 5116 7120

#### SE Asia, Singapore

Tel: +852 2961 4566

#### Japan

Tel: +81 3 5979 2149

#### Australia/New Zealand

Tel: +61 2 9413 2282

#### Malaysia

Tel: +60 32166 2260